



2-BEDROOM, 1-BATH CALIFORNIA BUNGALOW IN ALAMEDA'S EAST END

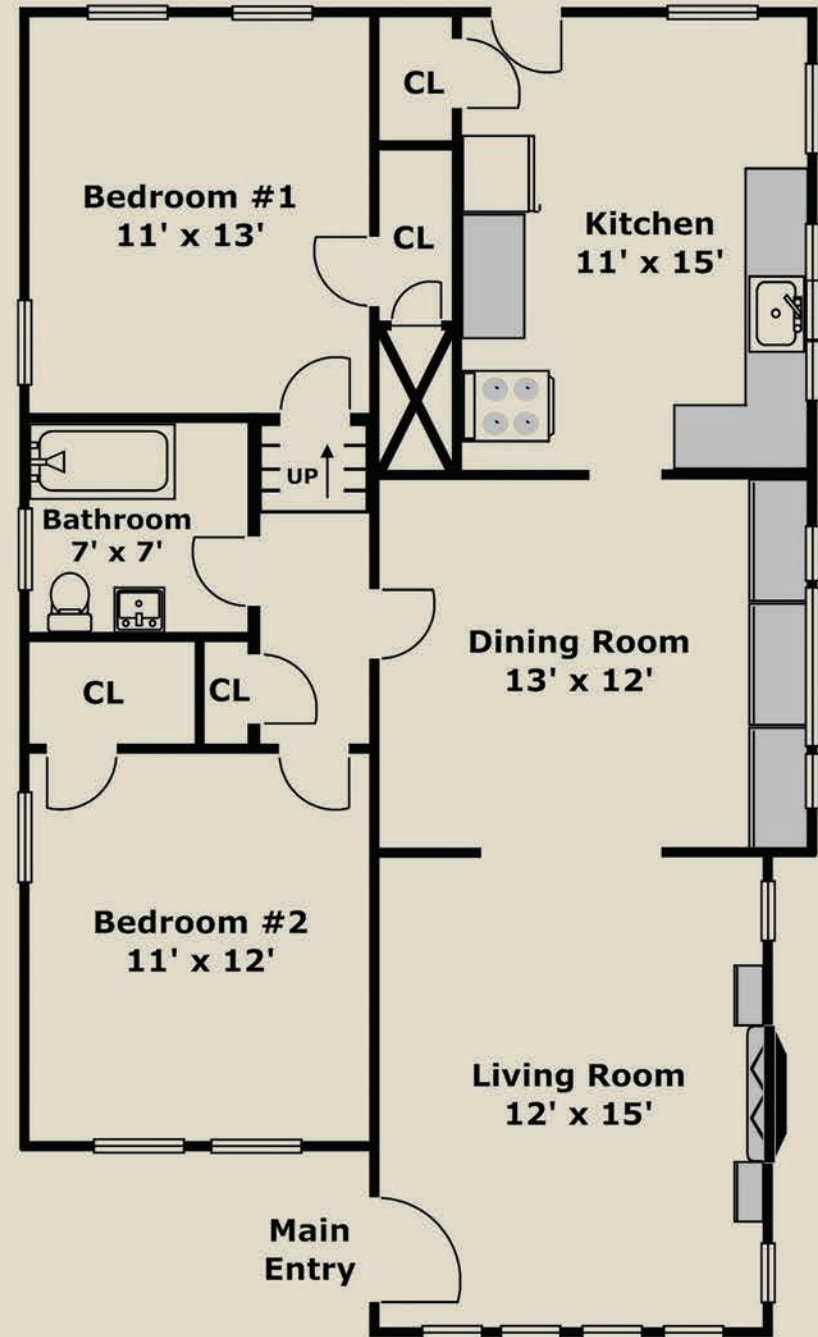
**3114 Madison Street, Alameda, CA 94501**

Living Area: Approximately 1,206 Sq.Ft.

Offering Price: \$699,000

**[www.Panavista.com/3114Madison](http://www.Panavista.com/3114Madison)**

(510) 523-0707   
**PANAVISTA REALTY**  
2503 Lincoln Avenue, Alameda



**Layout and all measurements are approximate, and not guaranteed to be either exact or to scale.**



### **3114 Madison Street, Alameda -- [www.Panavista.com/3114Madison](http://www.Panavista.com/3114Madison)**

*Built in 1918, this split-level, 2-bedroom, 1-bathroom California bungalow in Alameda's coveted East End is rich with character. The exterior exemplifies its inner beauty with its highly articulated front porch and porch piers, wood and stucco exterior, brick chimney and low-pitched gable roof.*

*A wide set of stairs leads up to the spacious front porch that is both warm and welcoming. Once through the wide entryway and inside the home, the formal living room beckons with its wall of windows, a fireplace flanked by bookcases, coffered ceiling and a hardwood floor.*

*Straight ahead is a formal dining room with a hardwood floor and a built-in china hutch with leaded-glass doors that are great for showcasing treasures.*

*The sunny eat-in kitchen is both warm and spacious, and provides a nice place to relax and catch up with friends and family while cooking dinner.*

*Off to the left, there is a bedroom on the main level in the front and another bedroom on the upper split level in the rear, both separated by a bathroom off the hallway on the main level.*

*The backyard features a large patio area that is both private and perfect for barbeques, and a personal orchard which includes an avocado tree, an apricot tree, a pluot tree, a nectarine tree and a fig tree.*

*There is a detached one-car garage and off street parking for added convenience.*

*3114 Madison Street is a gem of a home!*

#### **Other desirable attributes:**

- *New interior and exterior paint.*
- *Partial basement.*
- *Close to schools, shopping, local amenities on Encinal Avenue, and trendy restaurants and local shops on Park Street.*
- *Close proximity to Transbay AC Transit "OX" line to San Francisco and local transportation on both High Street and Encinal Avenue.*
- *Approximately 1,206 sq.ft. living area on an approximately 4,000 sq.ft. lot.*



Ramesh, Broker-of-Record  
Ramesh@Panavista.com  
www.Panavista.com  
(510) 523-0707

(510) 523-0707   
**PANAVISTA REALTY**  
2503 Lincoln Avenue, Alameda