

600 22ND STREET, OAKLAND, CALIFORNIA



7-UNIT RESIDENTIAL INCOME PROPERTY

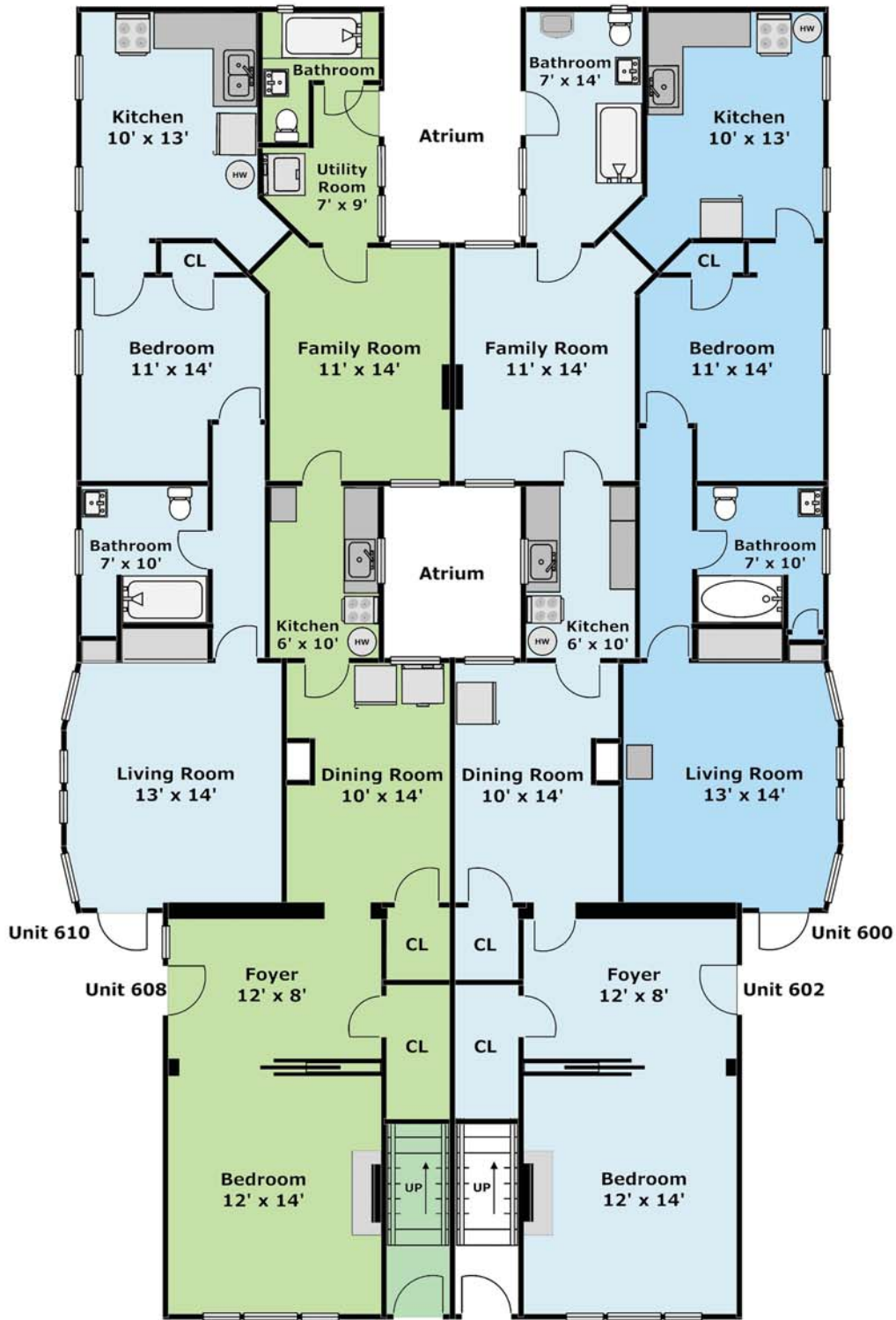
\$1,400,000

Offered Exclusively by:

RAMESH RAMCHANDANI, BROKER

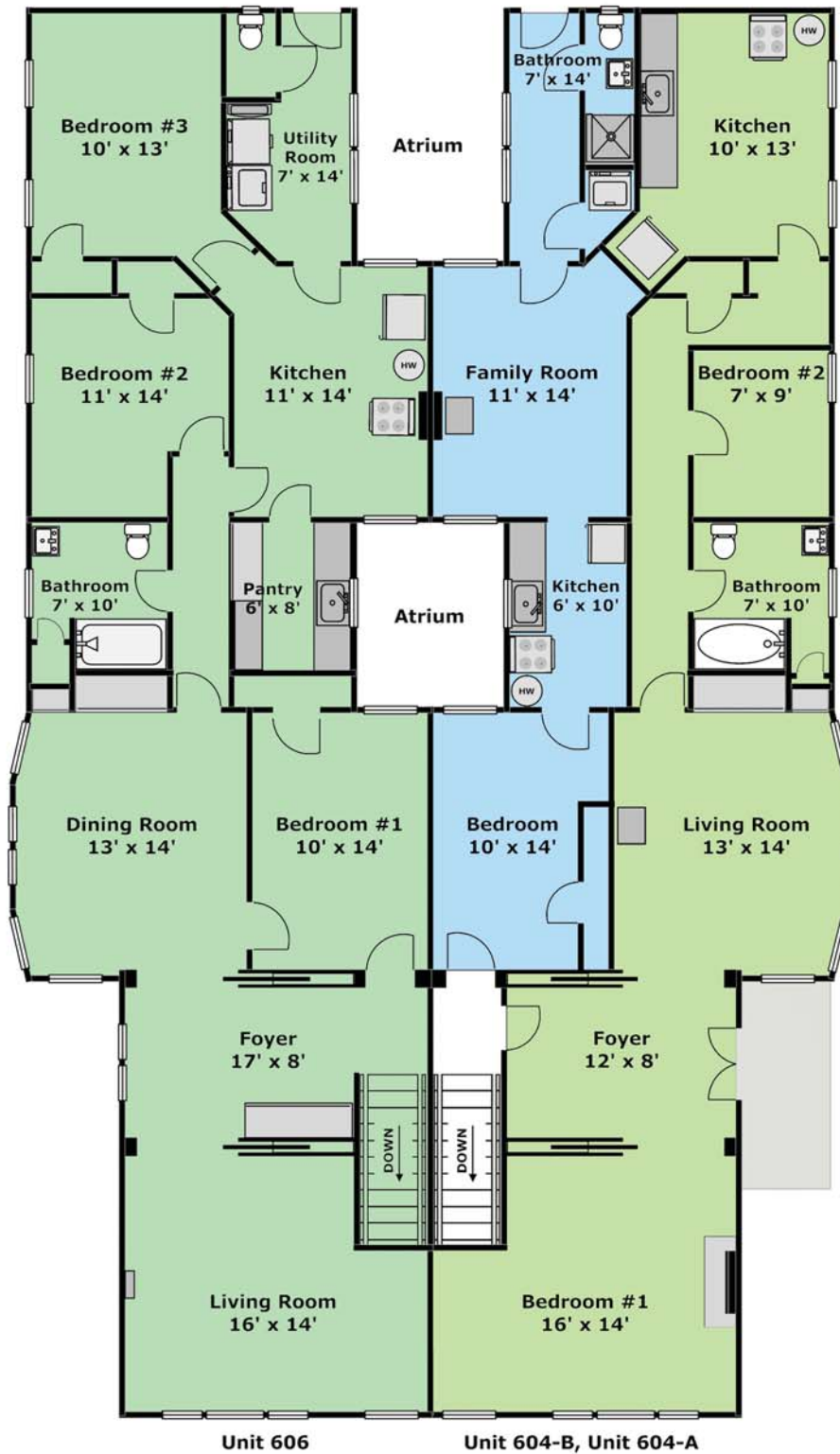
RAMESH@PANAVISTA.COM

(510) 523-0707



Lower Level

Layout and all measurements are approximate, and not guaranteed to be either exact or to scale.



Unit 606

Unit 604-B, Unit 604-A

Upper Level

Layout and all measurements are approximate, and not guaranteed to be either exact or to scale.

600 22nd Street, Oakland

(510) 523-0707 
PANAVISTA REALTY



PROPERTY DESCRIPTION

600 22nd Street is a delightful 7-unit apartment building located near the intersection of W. Grand Avenue and Telegraph Avenue in Oakland. Built in the early 1900s, this property consists of a 2-story building on a regular level lot measuring approximately 5,226 square feet.

The building, embellished with period detail, is of wood-frame construction with a wood exterior and composition shingle roof. The property features (4) 1-bedroom, 1-bathroom units on the lower level, and (1) 3-bedroom, 1-bathroom unit, (1) 2-bedroom, 1-bathroom unit and (1) 1-bedroom, 1-bathroom unit on the upper level. According to the County records, the building has 6,132 square feet of living area.

Each of the units is equipped with its own separate electric meter, gas meter and water meter. The owner pays for garbage and recycling.



(510) 523-0707
PANAVISTA REALTY